



Total Solution Provider in Saw Device

SA1732BM

AWS Tx, RF SAW Filter
Revision 0: January 2008



- Electrical Characteristics
 - Package Dimensions
 - Testing Environment
 - Frequency Characteristics
-

SAWNICS Inc.

460 Cheonheung-ri, Seonggeo-eup, Cheonan-si, Chungcheongnam-do, 330-836 / Korea.
Tel: +82 41 550 9372 / Fax: +82 41 550 9399 / www.sawnics.com



□ Electrical Characteristics

Maximum Ratings

Parameters Description	Unit	Minimum	Typical	Maximum
Operating Temperature Range	°C	-20	-	+85
Storage Temperature Range	°C	-40	-	+85
Maximum DC Voltage	V	-	-	0
Maximum Input Power	dBm	-	-	10
Source Impedance (single ended) ⁽¹⁾	Ω	-	50	-
Load Impedance (single ended) ⁽¹⁾	Ω	-	50	-
Package type & size	M			
Length x Width	mm ²	-	3.0 x 3.0	-
Height	mm	-	-	1.3

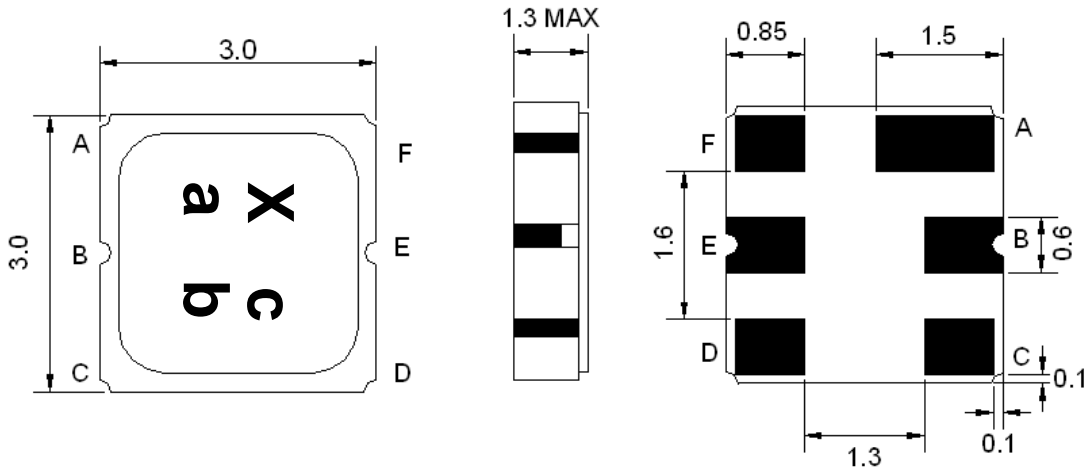
Electrical Specification

Parameters Description	Unit	Minimum	Typical	Maximum
Center Frequency (Fo)	MHz	-	1732.5	-
Insertion Loss within 1710.0 ~ 1755.0 MHz	dB	-	1.2	1.5
Amplitude Ripple within 1710.0 ~ 1755.0 MHz	dB _{p-p}	-	0.5	0.75
Attenuation:				
D.C ~ 1650.0 MHz	dB	13	15	-
1800.0 ~ 2200.0 MHz	dB	15	17	-
VSWR within 1710.0 ~ 1755.0 MHz	dB	-	1.6	2.1

Notes : (1) With Matching Network (Ref. Testing Environment Circuit as shown below).

(2) Insertion Loss is excluding PCB Loss. (PCB Loss, 0.2dB)

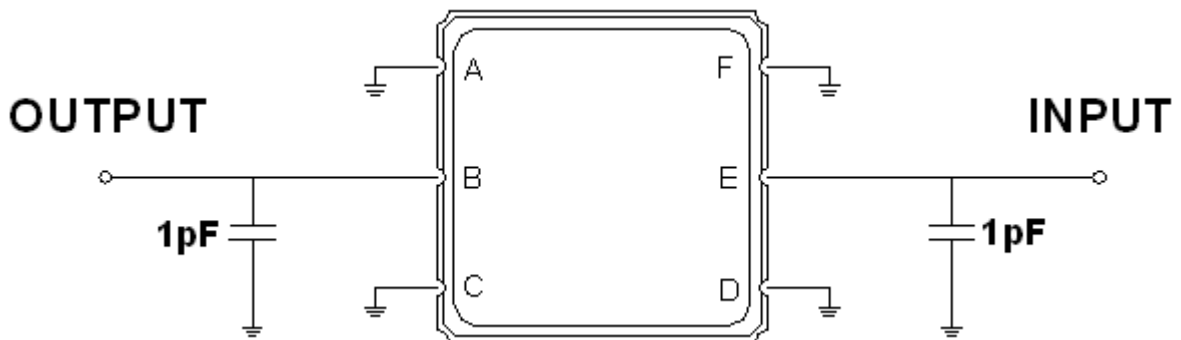
Package Dimensions



Marking Descriptions	
X	AWS Application
c	Series Number
a	Date Code(Year)
b	Date Code(Month)

Pin Description	
A, C, D, F	Ground
E	In
B	Out

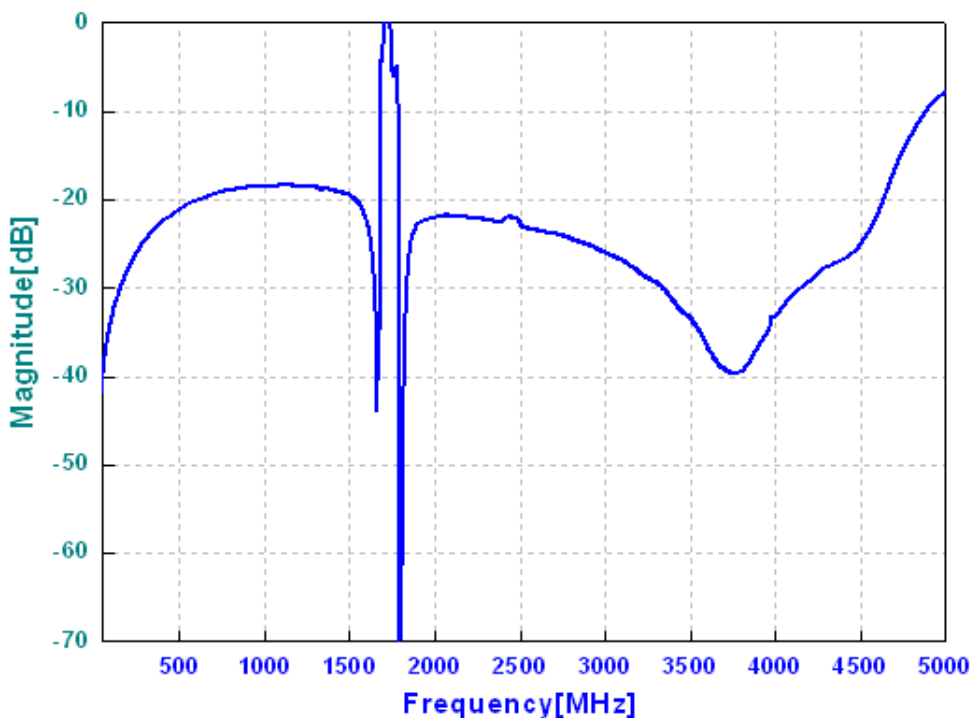
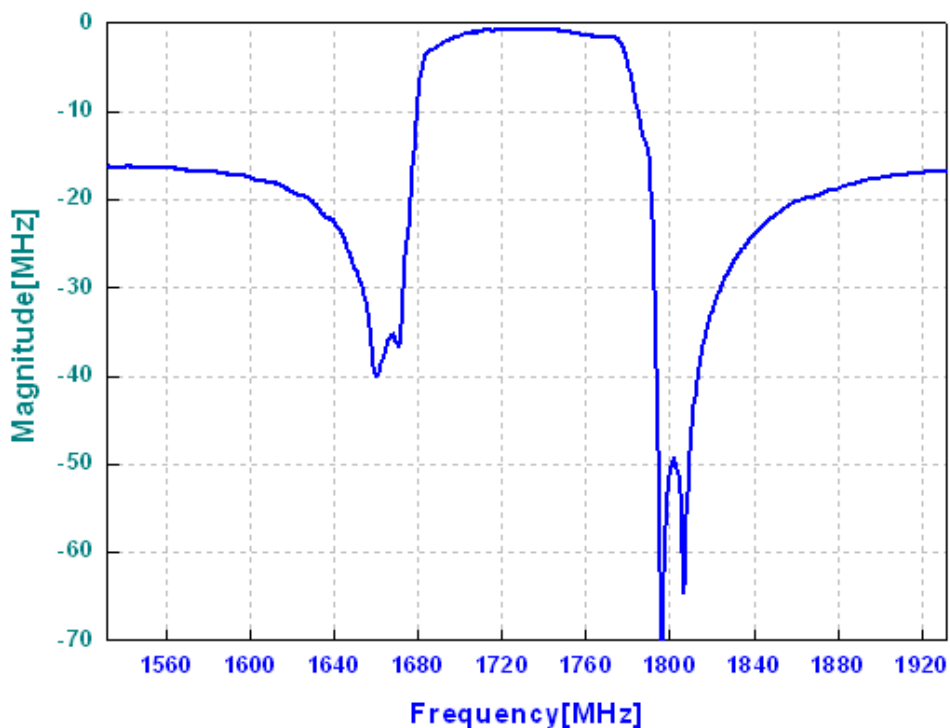
Testing Environment



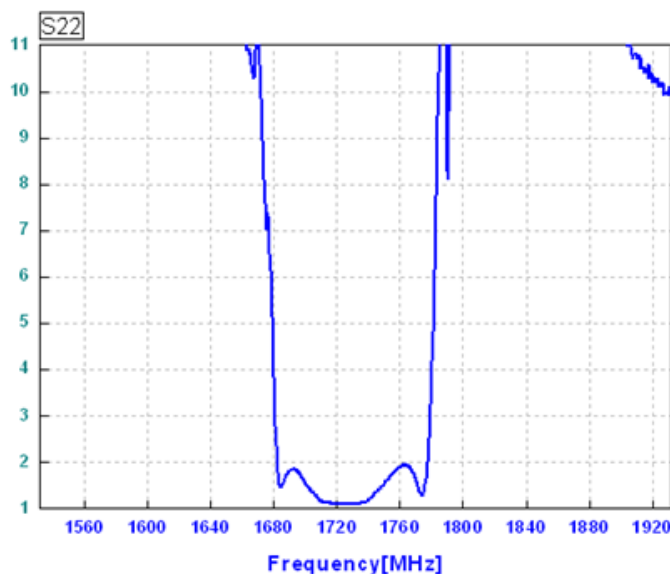
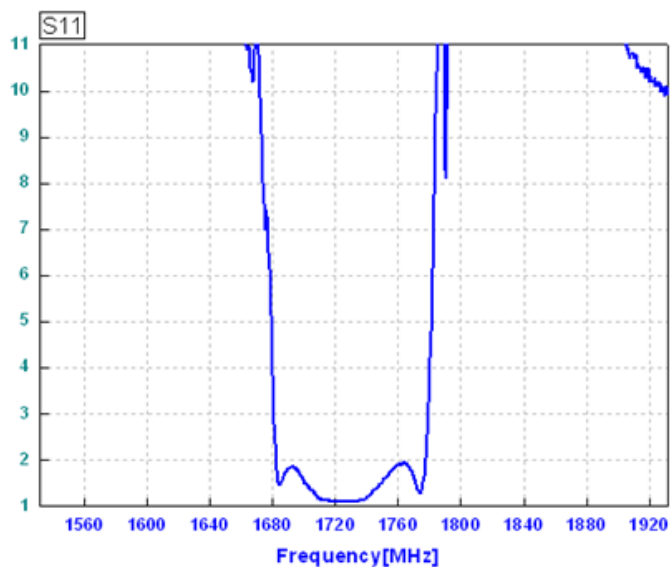
Source & Load Impedance: 50 Ω

□ Frequency Characteristics

Frequency Response



VSWR



Smith Chart

